

LA

262

.W5A5

1918



Class LA262

Book .W5A5

- 1918

Dup. 18
D. of D.

Educational Survey of Wilkinson County Georgia

By

M. L. DUGGAN, Rural School Agent

No. 21

Under Direction of State

DEPARTMENT OF EDUCATION

M. L. BRITTAIN

State Superintendent of Schools

1918

Monograph

Educational Survey of Wilkinson County Georgia

By

M. L. DUGGAN, Rural School Agent

No. 21

Under Direction of State

DEPARTMENT OF EDUCATION

M. L. BRITTAIN

State Superintendent of Schools

1918



HON. VICTOR DAVIDSON

WILKINSON COUNTY SCHOOL ADMINISTRATION.

HON. VICTOR DAVIDSON, Superintendent ----- Irwinton, Ga.

BOARD OF EDUCATION.

HON. GEORGE H. CARSWELL, Chairman ----- Irwinton, Ga.

HON. J. H. PENNINGTON ----- McIntyre, Ga.

HON. L. E. THOMPSON ----- Toombsboro, Ga.

HON. J. T. STOKES ----- Gordon, Ga.

HON. W. T. PORTER ----- Danville, Ga.

MISS OLA SAMMONS, Home Economics Agent ----- Irwinton, Ga.

D. of D.
JUN 26 | 1918

WILKINSON COUNTY

Wilkinson county is located near the geographical center of the state, and just below the Fall Line. Its drainage is east and southeast into the Oconee river, which marks its eastern boundary.

“The county is noted for its extensive deposits of kaolin and bauxite. The output of the kaolin mines, which is used chiefly in the paper trade, is greater than any other county in the State. The bauxite mines also have a large output.

The geological formations in which these deposits are found and which cover practically all of the county, are known as Cretaceous and Eocene. They were laid down in the open sea when the Atlantic coast line extended as far north as Columbus, Macon, Milledgeville, and Augusta.”

DR. McCALLIE, State Geologist.

Aside from the mining of kaolin and bauxite, and a pulp mill making paper from second growth pines, this is **strictly an agricultural county**. There is only one town above 300 population, and none above 1,000. The chief, and almost the only, commercial product of the farms is cotton; although the upper part of the county is well adapted to growing watermelons, and a considerable number of cars are shipped. The cotton crop runs around ten thousand bales.

RESOURCES.

The area of the county is 431 square miles, and the population 10,078. The main line of the Central of Georgia Railway running from Atlanta to Savannah traverses the county

for twenty-five miles from northwest to southeast, and the Milledgeville Branch of the same line runs from a junction point at Gordon northward through the county eight miles.

Property as returned for taxation, 1917 -----\$1,986,000.00
To which should be added Corporation values__ 767,485.00

Making a total of taxable property for county \$2,753,485.00

PUBLIC SCHOOL FUNDS.

With the exception of the three local tax school districts of Irwinton and Gordon and McIntyre **the county has no public school funds** other than that apportioned to it from the State.

The State school fund for 1917 amounted to ----\$10,586.00

This was apportioned to the **school districts** on a basis of \$5.00 per capita by the school census to the white children, and \$ per capita to the negroes.

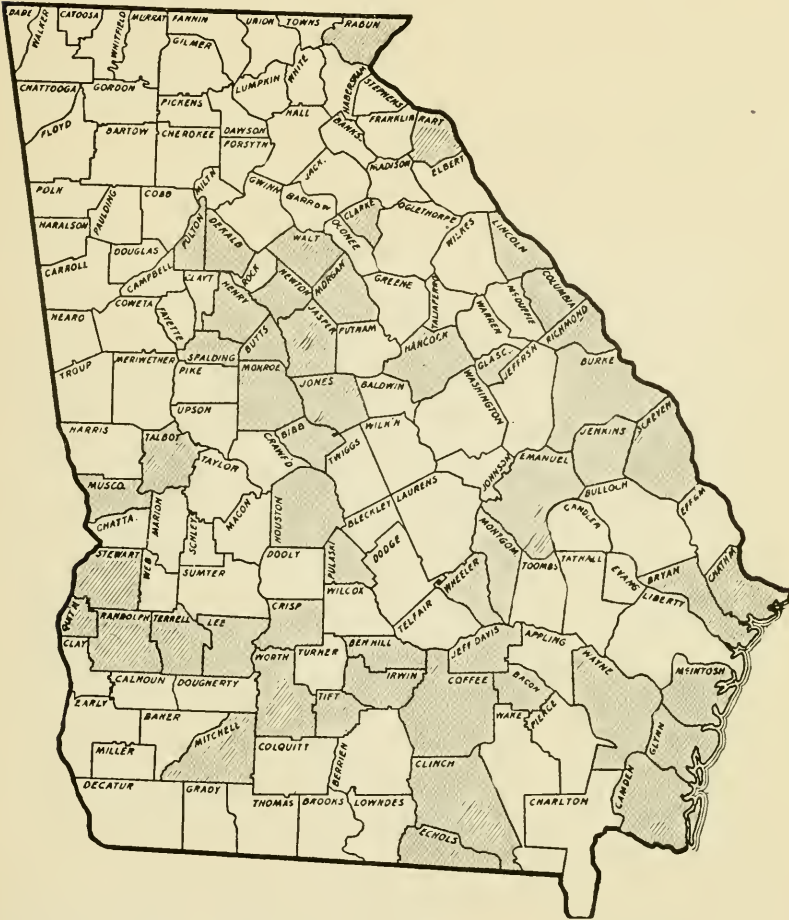
With such meager support the public schools can be operated for only five months on small salaries.

A BETTER SUPPORT FOR THE SCHOOLS.

The children can not be properly educated with only a five months school year. Better schools and longer terms are imperative if the county ever expects to go into the business of education seriously. These can not be had without more money. Good schools, like good roads, must be paid for. And there is no certain or satisfactory way except through a **county local school tax to supplement the State school funds**. The educational interest of the county's children call loudly for it.

GEORGIA.

NOTE: An experience with county-wide local school tax is the most effective argument for it. Counties adjacent to local tax counties, seeing its benefits, most readily vote for it. See map.



Shaded Counties: County-wide Local Tax.

LOCAL TAX COUNTIES.

These counties tax themselves in order that all—not some—of their schools may be improved. One by one others are adding themselves to the roll of the educational leaders who demonstrate thus practically their belief in the necessity for more and better training for the children. A few years ago only Chatham, Richmond, Bibb, and Glynn had county-wide local taxation:

Bacon, Ben Hill, Bibb, Bryan, Burke, Butts, Camden, Chatham, Clarke, Clinch, Coffee, Columbia, Crisp, DeKalb, Echols, Emanuel, Fulton, Glascock, Glynn, Hancock, Hart, Henry, Houston, Irwin, Jasper, Jeff Davis, Jenkins, Jones, Lee, Lincoln, McIntosh, Mitchell, Monroe, Montgomery, Morgan, Muscogee, Newton, Pulaski, Quitman, Rabun, Randolph, Richmond, Screven, Spalding, Stewart, Talbot, Terrell, Tift, Walton, Wayne, Wheeler, Worth.

WHAT WOULD GOOD SCHOOLS COST THE COUNTY?

A county-wide local school tax levy of two and a half mills, or twenty-five cents per hundred dollars, would yield -----\$ 6,883.00
to which would be added State schools funds,
1918 ----- 12,608.40

making a **total school fund** for the county -----\$19,491.40

An increase over 1917 of \$8,905.40, or 85%.

Such an increase would justify the county Board of Education in operating **all of the county's schools** seven or eight months, paying better salaries, providing better equipments, and gradually building better school houses. It should within a year or two **guarantee to every child in the county** fully twice as good educational opportunities as they now have.

Fifty-two Georgia counties (as shown on map) are no longer withholding these benefits from their children, but are cheerfully paying the self-imposed school tax while their children are reaping the benefits therefrom. "People are more important than property."

Wilkinson county should decide this question between their children and their property without further delay. And it is worth their while to consider that of this two and three-quarter million dollars of property that would thus be lightly taxed for the benefit of **their schools** just about half of it (including the corporate property) **belongs to non-residents**. Which means that **each dollar paid for the education of their own children would be duplicated by non-residents**. These non-residents, however, would be benefited in the increased value of their property, and would therefore gladly pay the school tax.

ADMINISTRATION.

The Board of Education in Wilkinson county seems to have inherited a **very bad policy** in the matter of administering the public school funds, such as was **never contemplated in law**, and that tends inevitably towards the **weakening and destruction of any strong and efficient system of schools** for the county. The plan has been to apportion annually the state funds **to the local trustees of the school districts** on the basis of the school population of the several districts, **leaving entirely to these local trustees the number of schools, their locations, the grades and salaries of the teachers, length of term, etc.** Thus it is seen that **in some school districts the meager amounts thus apportioned is divided into still smaller amounts** between two or three small schools within close proximity to each other. The spirit of the law has been violated in the matter of minimum distance apart for the schools, and **the potential strength of these schools greatly weakened** by their many subdivisions in answer to individual or community whims and prejudices. The county seems to be divided into about the right maximum number of school districts contemplated by law (the minimum size prescribed being sixteen square miles), but there are at least one-third more schools in the county than the law contemplates. **By more than that much are they weakened.**

SOME EVIDENCES AND RESULTS OF A WEAK SYSTEM.

The frequent changing of teachers is both a **result and evidence of the general weakness of the system.** Two-thirds of the teachers are serving their first term at their present school, and more than one-third hold below first-grade license. No teacher below first grade is serving a second term at same school. The short length of the school year and the short terms of teachers' service partly account for the **noticeable absence** of organized club work, or "Associated

Activities", everywhere now-a-days regarded so highly in progressive public schools. The school grounds are generally unimproved and neglected. At many **only one toilet** is provided, at some they are "**in bad condition**", while at others **none** are to be found. None of the school houses are well planned, only few are made attractive, and some are uncomfortable. At most of them there is provided no equipment other than a poor blackboard and a very cheap map or two. Comparatively few of the schools offer attractions to pupils or passers-by. **Only one school** has a "Georgia Standard Certificate", although several others are striving to reach the standard. The people of the county generally are **not proud of their public schools**, the teachers are not satisfied with their work, and the children are not afforded as good facilities for thorough education as they deserve or as the county is able to provide for them.

HOPEFUL SIGNS.

The growing general dissatisfaction at existing conditions is a hopeful sign if **a wise and vigorous administration will take proper advantage of it**. Nobody in the county realizes the inefficiency of the system or the unsatisfactory condition of the schools better than the county superintendent. A strong system and better schools are not likely to be brought about except through his leadership; but his leadership towards such an end will be unavailing without the authority of his Board of Education and the support of a public sentiment throughout the county. The latter, however, will assuredly follow the former. It will undoubtedly require a courageous and continued fight to revolutionize the weak system, but the cause is well worth it.

The Home Demonstration Agent, just beginning her work here in full and cordial co-operation with the superintendent and his schools, brings to the county a **new and powerful educational agency that will be far-reaching and effective** if properly received and encouraged by the people. That

it is being so received we are led to believe from the fact that **every school responded** to her personal appeals for girls to join her canning clubs, resulting in a total of **more than two hundred members enrolling** during her first visit to these schools. Better evidence, however, will be shown by the per centage of this two hundred that persists to the end of the year.

The superintendent is manifesting very great interest and energy in his work, and the Board of Education could not do a better thing for the schools than to **employ his whole time and energies in the interest of public education** in the county. The surpassing importance of so great a public interest would fully justify the necessary expenditure.

The sole purpose in this endeavor to reveal to the patrons and citizens of the county the true conditions of their public schools is to aid them to a better realization of their inadequacy. If this is accomplished we believe they will be entirely willing to make some necessary sacrifices for the sake of better educational facilities for their county. With the earnest hope that this report may contribute to such end it is respectfully submitted to the careful consideration of all good citizens of Wilkinson county.

M. L. DUGGAN,
Rural School Agent for Georgia.

January 15, 1918.



TALMADGE INSTITUTE.

(A Standard School.)

Teachers: L. D. Grice, Principal; Miss Mabel Hunter, Miss Ruby Culpepper, Assistants, P. O. Irwinton, Ga.

Location: At County seat; population about 300.

Grounds: Area, several acres; titles in trustees; well sodded, but unimproved; ample playgrounds; well kept yards; two toilets in good condition.

Building: Value \$1,600.00; two-story frame building; three class rooms; cloak rooms improvised; fairly well lighted; ceiled and painted; well kept; building is not well planned and does not meet the demands of the community.

Equipment: Double patent desks and teachers' desks; cloth blackboards; set of maps mounted in case; globe; charts; framed pictures; reference dictionary; small library, good sectional book-case.

Organization: Three teachers; nine grades; enrollment 68; school population of district 83; school year nine months continuous term; Talmadge Institute Library Club; Canning Club.

Maintenance: From state school fund \$415.00; the local tax district levies five mills.

Canning Club Members: Misses Florence Hartley, Mary Alice Stinson, Floride Carswell, Benita Dixon, Lucile Gibbs, Margaret King, Alice Parker, Beulah Pennington, Loise Billue, Rosa Lee Dean, Madeline Simpson, Gladys Pennington, Bessie Skelton, Claire Careswell, Ellen Carswell.



GORDON HIGH SCHOOL.

Teachers: J. N. Sarrette, Principal; Miss Cora Hall, Miss Izetta Davis, Miss Mae Pope, P. O. Gordon, Ga.

Location: On Central of Georgia Railway at junction of main line and Milledgeville Branch. Population about 1,000.

Grounds: Area, one and half acres; titles in trustees; bare and unimproved; playgrounds ample, but unimproved; no school gardens; two toilets in **bad condition**.

Building: Value \$3,000; two-story frame building; unsuitable; four class rooms; no cloak rooms; improperly lighted; fairly well kept; in bad repair; painted outside only.

(The school district has just voted for bonds for an up-to-date new building, by a majority of 100 to 1. The new building will be erected at once to cost approximately \$16,000.00.)

Equipment: Double patent desks; very poor blackboards; no charts; small globe; very few maps; no framed pictures; a reference dictionary; a school library, sectional case. (The new building will be properly equipped with furniture and teachers' helps.)

Organization: Four teachers; nine months continuous term; ten grades; enrollment 120; school population of district 133; programs posted; a literary society; a woman's club.

Maintenance: From State school fund \$665.00; five mills local school tax levy.

Members Canning Club: Misses Ola Mae Branan, Lila Farmer, Mattie Belle Gibbs, Liela Mae Brooks, Calva E. Pitts, Clifford Dennard, Lucile Hawthorne, Charlie Fountain, Mary Ryle, Berta McCook, Mabel Jackson, Francis Camp, Annie Laurie Bloodworth, Effie Bloodworth, Edna Vinson, Lottie Byington, Hannah Isenby, Vernie Nelson, Nina Belle Stokes, Nettie Gay, Helen Jennings, Beatrice Johnson, Winnie Taylor, Janie Fountain, Louise Brookings, Emmie Ezell.



1. Bell Schcol. Mrs. E. N. Greene, teacher, Allentown, Ga.
2. Chapman School. Mrs. T. B. Williams, teacher, Allentown, Ga.
3. Cool Springs School. Miss Allie Penticuff, teacher, Allentown, Ga.

BELL SCHOOL DISTRICT.

This school district has a school population of 104, receives from the county Board of Education \$520.00, and divides it between the Bell school, the Chapman school, the Cool Springs school, and Sand Hill school.

Locations: The location of these four schools within the same school district with reference to each other forms a triangle, the sides of which are two, two and half, and three miles. There appears to be no natural obstacles, such as "mountains, streams over which there are no bridges, dangerous roads, etc."

Grounds: Each of these four schools occupies one acre; titles at Cool Springs in trustees, at Chapman school in private individual, at Bell and Sandy Hill schools doubtful. Yards well cleaned up, but unimproved at each place. No school gardens. Two toilets in fair condition at each school.

Buildings: At each, one class room with veranda, but without cloak rooms; none properly lighted; no painting; Cool Springs in bad repair, the others in good condition; value, \$450.00 each.

Equipment: Bell school has patent desks, good blackboards, charts, and a reference dictionary; but is without globe, maps, pictures, library, etc. Sand Hill, Cool Springs and Chapman schools have home-made desks, good blackboards, but no other equipment.

Organization: These schools have one teacher each; five months term, and enrollments respectively of 22, 17 and 39 pupils. There are no organized clubs or societies, and the teachers are serving their first year at each place.

Members Canning Club: Misses Mattie Cowan, Estelle Cowan, Myrtle Green, Lizzie Belle Butler, Evelyn Butler, Hattie Canby, Lucy Canby.



1. Red Hill School. Miss Mary Fountain, teacher, Gordon, Ga.
2. Lavender School. Miss Ellen King, teacher, Irwinton, Ga.
3. Glenella School. Miss Mary Smith, teacher, McIntyre, Ga.

GLENELLA SCHOOL DISTRICT.

Glenella district has a school population of 116, and is apportioned \$580.00 of the State school funds by the county Board of Education. The local trustees divide this amount, which is not supplemented from any source, among three schools located in the district, viz.: Glenella, Lavender, and Red Hill.

Location: Glenella is three miles northeast from Red Hill, and Lavender about three and half miles southeast. Other schools are located within three miles of each of these.

Grounds: The Lavender school occupies one acre, the title of which is in the Board of Education. The grounds are being improved, and a school garden provided for. The Glenella lot (of uncertain size) has been used for school purposes from a time "when the memory of man runneth not to the contrary". Both area and title at Red Hill are uncertain. At each place there is **only one toilet in bad condition.**

Buildings: These are one-room buildings, without cloak rooms. Their value varies from \$300.00 to \$500.00, Lavender being the best one. Some further improvements and enlargements, including cloak rooms, painting, etc., are in contemplation at Lavender. This school is also the only one of the group properly lighted. All were well kept.

Equipment: Glenella has double patent desks; the others home-made desks. Neither have good blackboards or maps. A chart and reference dictionary at Glenella; a small globe at Red Hill, and a small library at Lavender. Covered water cooler at Lavender.

Organization: One teacher schools; school year five months; seven grades; enrollment, Red Hill 25, Lavender 27, Glenella 33; programs posted at each school. A Bird Club at Glenella.

Members Canning Club: Misses Margaret King, Opal Jones, Vera Moss, Jessie Lavender, Jewell Lavender, Emmie Myrick, Effie Bloodworth, Maggie Young, Lucy Lavender, Victoria Lavender, Allena Moorary, Alice Bachelor, Louise Lee Stapleton, Rubie Culpepper, Alma Gladdin.



Fairview

Hazeldean

FAIRVIEW SCHOOL DISTRICT.

Fairview school district contains two schools, viz.: Fairview and Hazeldean. The school population of the district is 142, and the appropriation from the Board of Education is \$710.00, which is divided by the local trustees between the two schools.

Location: Fairview is three miles west of Hazeldean, and three miles further west will reach Whitaker school in another district. There are no "mountains, streams over which there are no bridges, dangerous roads, etc."

Grounds: Fairview is private property. Area and titles at Hazeldean seem uncertain. Playgrounds small at both places. No school gardens. Two toilets in fair condition at Hazeldean. No toilets at Fairview.

Buildings: Hazeldean—value, \$800.00; one class room; no cloak rooms; sufficiently but improperly lighted; in good repair; well kept; painted inside and outside.
Fairview—value, \$600.00; one class room; no cloak rooms; insufficiently lighted; in good repair; fairly well kept; ceiled, but unpainted.

Equipment: At both schools home-made desks; poor blackboards; and no maps of value or any other equipment.

Organization: One teacher; five months terms; enrollment, Hazeldean 39, Fairview 47. No organized clubs or societies.

Members Canning Club: Misses Berta Jones, Bessie Reynolds, Essie Mae Reynolds, Ella Bentley, Della Bentley, Lizzie Allen, Louise Moore, Leah Deason, Marie Usry, Mabel East, Lucile Jones, Pearl Reynolds, Verdie Mae Waters, Ruby Tarpley, Mary Lizzie Woodall.



Salem

Poplar Head

SALEM SCHOOL DISTRICT.

The Salem school district contains two schools, Salem and Poplar Head, but these schools are four miles apart. There appears to be no other schools located nearer than about four miles of either of these. The school population of the district is 84, and the annual appropriation from the Board of Education is \$420.00 to the district. There is no local fund.

Grounds: Poplar Head is located in a very fine grove of large oaks, and the school owns eight acres of fine woodland. Titles are in the local trustees. The playgrounds are large, but without improvements. There are no school gardens. **Only one toilet**, in fair condition.

Salem is located adjacent to a church lot, the limitations of which we are unable to ascertain. Titles are probably in the local trustees. Ample playgrounds available, but unimproved. No school gardens. **Only one toilet**, in bad condition.

Buildings: At Poplar Head one room with veranda; no cloak rooms; fairly well lighted; in good repair; well kept; ceiled, but unpainted. At Salem one room with veranda; no cloak rooms; improperly lighted; well kept; painted inside, unpainted outside.

Equipment: At Poplar Head partly seated with single patent desks; first-class blackboards, and a reference dictionary, but no maps or other school equipment.

At Salem double patent desks; first-class blackboards; good set maps mounted in case; framed pictures; a reference dictionary, and a small library. Also covered water cooler and individual cups.

Organization: At both schools, one teacher; five months term; seven grades; enrollment at Salem 29; at Poplar Head 44. No organized clubs.

Members Canning Club: Misses Lizzie Miller, Fleta Fordham, Emmie Sue Fordham, Loma Tillman, Bessie Fordham, Rosalee Orr, Emmie Montgomery, Nellie Carlson, Mintoria Lord.



Whitaker.



Mt. Carmel.

MT. CARMEL SCHOOL DISTRICT.

The Mt. Carmel school district shows a census of 109 children. The Board of Education apportioned \$545.00, and the local trustees operate two schools in the district without further financial aid. These are Mt. Carmel and Whitaker, located **two miles apart**. Also the Bloodworth school is two and half miles northwest, and the Thompson Branch school is three miles north of Mt. Carmel; while Fairview school is three miles east, and Thompson Branch school three and half miles north of Whitaker. No "natural obstacles or dangerous roads" intervene.

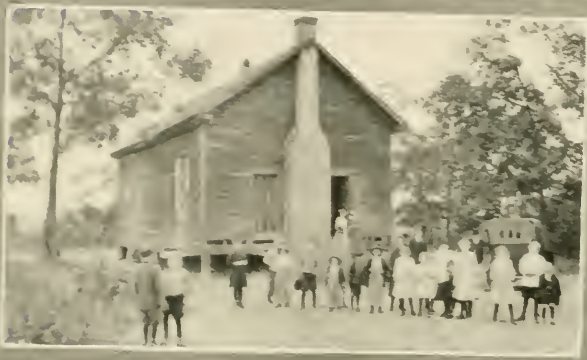
Grounds: Mt. Carmel school lot is the property of a church. Whitaker school occupies three-quarters of an acre, with some uncertainty as to titles. The former is in a fine grove, while the latter is a bare lot. Neither have been improved. No school gardens. At each is **only one toilet**; both in bad condition.

Buildings: Value of school houses \$350.00 each. One class room; no cloak rooms; badly lighted; in good repair; well kept, unpainted; describes both buildings.

Equipment: Rough home-made desks; poor blackboards; no maps, globes, pictures, reference dictionaries, or libraries. Both schools unequipped.

Organization: Whitaker—five grades; enrollment 30; Mt. Carmel—seven grades; enrollment 49. No organized clubs.

Members Canning Club: Misses Inez Langford, Carrie Carter, Alma Hatfield, Eva Lee Carr, Maggie Lou Langford, Ruth Hardee, Nina Carr, Charlie Arrington, Clara Whitaker, Dessie Moore, Aluetia Criswell, Willie Moore, Inez Whitaker, Maud Parker, Sarah Parker.



1. Bloodworth. 2. Bateman. 3. Snow Hill.

IVEY SCHOOL DISTRICT.

In Ivey district are located Bloodworth school, Bateman school, and Snow Hill school. The locations of these schools with reference to each other form a triangle, the sides of which are respectfully two and half, three, and three miles. Also, Bloodworth is only two and half miles northwest of Mt. Carmel, and Bateman is only four miles east of Gordon, in other school districts. There are no "natural causes or local conditions", such as "mountains, streams over which there are no bridges, dangerous roads, etc.," creating for the county board of education the "right to establish school districts with areas less than sixteen square miles."

The school population of this district is 97, and the local trustees are apportioned \$485.00 for the maintenance of the three schools. No supplemental fund is provided.

Grounds: Both the areas and titles of these school lots are doubtful, except that at Bloodworth it is private property. Playgrounds are small and unimproved, and there are no school gardens. Only one toilet provided at each school.

Buildings: Value \$400.00; one class room; no cloak rooms; ceiled but unpainted, describes each. Snow Hill and Bateman are in bad repair. Bloodworth is well kept school room.

Equipment: Bateman has double patent desks, the other two seated with home-made desks. All have very poor blackboards; no maps or other equipment, except a small library at Bloodworth.

Organization: Bateman school has six grades; enrollment 25 pupils. Snow Hill six grades; enrollment 35 pupils. Bloodworth eight grades; enrollment 40 pupils. Five months term at each.

Bloodworth school reports weekly meetings of "The Glad Club."

Members Canning Club: Misses Lelia Mae McCook, Essie Lord. Lonella Bloodworth, Clara Lord. Sarah McCook, Eva Bloodworth, Pauline Weaver, Eddie Bell, Mattie Etheridge, Fannie Lucile Beck. Myrtle Wood, Lucile Wood, Effie Mae Ne-Smith, Coy D. Snow, Ethel Snow, Rosa Snow, Nancy Etheridge, Essie Lee Etheridge. Inella Fountain, Annie Eliza Beck, Adeel Etheridge, Thelma Burch.



Vernon Johnson.



Clear Creek.

CLEAR CREEK SCHOOL DISTRICT.

Clear Creek school district has a school population of 57, and gets an appropriation of \$285.00. Clear Creek and Vernon Johnson schools are in this district, though the latter is located immediately on the line dividing Wilkinson and Twiggs counties, and is partly supported by Twiggs county. Clear Creek is three miles north of Vernon Johnson, and three miles further north will reach Red Hill school. The roads are good.

The titles to the property at Clear Creek is in a Baptist church; the church yards used for playgrounds; no school gardens; only one toilet, in bad condition.

At Vernon Johnson is a two acre lot, titles in trustees; ample playgrounds; small school garden; only one toilet, in bad condition.

The building at Clear Creek is one room, without cloak rooms, ceiled but unpainted, in good condition and well kept. Value \$450.00.

At Vernon Johnson is a good two-room building; value \$1,500.00; cloak rooms; fairly well lighted; well kept; painted inside and outside.

Double patent desks; fairly good blackboards, and one United States history map constitute the entire equipment at Clear Creek.

At Vernon Johnson are single patent desks; poor blackboards; two maps; two globes; framed pictures; a reference dictionary; and a small library.

At Clear Creek is one teacher; five months term; six grades; 27 pupils enrolled; no organized club work; no program posted.

At Vernon Johnson one teacher; five months for Wilkinson county pupils and six and half months for Twiggs county children; eight grades; enrollment 31; program posted.

Members Canning Club: Bessie Brooks. Blanche Brooks. Peggie Brooks, Rubie Brooks.



ALLENTOWN SCHOOL.

Miss Emmie Gordon, teacher, Allentown, Ga.

Location: In Wilkinson, but quite near the corner of Wilkinson, Bleckley, Twiggs and Laurens counties, with a small patronage from each. One mile east of Danville.

Grounds: There appears some doubt as to area and titles; yards clean, but bare; unimproved; ample playgrounds; no school gardens; **only one toilet.**

Building: Value \$1,000.00; two-story frame building; Lodge rooms in second story; one very large class room; no cloak rooms; improperly lighted; roof leaking; painted; well kept.

Equipment: Double and single patent desks; poor blackboards; one United States history map; chart; globe; small library; one hundred and fifty dollars in hand for further improvement and equipment.

Organization: One teacher; nine grades; enrollment 27; no program posted; five months term.

Members Canning Club: Misses Louise Herndon, Viola Herndon, Clara Herndon, Lizzie Sapp, Annie Mae Jones, Elizabeth Pierce, Isabelle Nunn, Beulah NeSmith, Lottie Little.



BETHEL SCHOOL.

Miss Lila Gallemore, teacher, Irwinton, Ga.

Location: Three miles southeast of Lavender school; five miles southwest of Irwinton.

Grounds: Area and titles doubtful; yards well cleaned up; very small playgrounds; no school gardens; **one toilet** in bad condition.

Building: Value \$400.00; one class room; no cloak rooms; fairly lighted; in good condition and well kept; ceiled, but unpainted.

Equipment: Home-made desks; very poor blackboards; one United States history map; no globe; no charts; no framed pictures; no reference dictionary; no library. Covered water cooler, individual cups.

Organization: One teacher; six grades; enrollment 27; no program posted; no organized clubs or societies.

Members Canning Club: Misses Eva Justice, Irene Dixon, Louise Stinson, Effie Murphey, Maxie Sue Justice.



BUTLER SCHOOL.

Miss Annette Butler, teacher, Danville, Ga.

Location: Four miles north of Bell school.

Grounds: Area and titles doubtful; bare and unimproved; ample playgrounds; no school gardens; **only one toilet**, fair condition.

Building: Value \$500.00; one class room; no cloak rooms; fairly well lighted; in good repair; well kept; ceiled; unpainted.

Equipment: Double patent desks; very poor blackboards; several maps; no charts; no globe; no pictures; no reference dictionary; no library.

Organization: One teacher; six grades; enrollment 11; no program posted; no organized clubs; five months term.

Maintenance: School population of district 24; appropriation \$120.00.



DANVILLE SCHOOL.

E. B. Lazenby, Principal; Miss Lucy Bellows, Assistant, Danville, Ga.

Location: The line dividing Wilkinson and Twiggs counties also divides the town of Danville, but the school is located on the Wilkinson county side of this line.

Grounds: Area, one acre; titles in local trustees; fine grove; good playgrounds, rather small; yards well kept; no school gardens; only one toilet, in good condition.

Building: Value \$2,000.00; two class rooms; halls used for cloak rooms; well lighted; in good repair; not well kept; painted inside and outside.

Equipment: Single and double patent desks and teachers' desks; blackboards in very bad condition; set of maps mounted in case; no charts; no globe; a few pictures; a reference dictionary; a small library.

Organization: Nine months term; two teachers; ten grades; enrollment, 61 from Wilkinson county, 12 from Twiggs; Lanier Literary Society.

Maintenance: School population of district (in Wilkinson county) 48; appropriation from Board of Education \$240.00; small amount also paid by Twiggs county; balance from tuition.

Members Canning Club: Misses Jennie Claire Meadows, Mellissa Porter, Marie Dukes, Lucile Williams, Mildred Maxwell, Lois Lee, Francis Johnson, Edith Johnson, Rose Allen, Louise Bryan, Lois Hill.



McINTYRE SCHOOL.

J. T. Dupree, Jr., Principal; Miss Ophelia Snow, Assistant, McIntyre, Georgia.

Location: At McIntyre station on Central of Georgia Railway; two miles south of Whitaker school; three miles north of Irwinton.

Grounds: Area and titles doubtful; adjoining church lot; partly covered in pine grove; entirely unimproved; small playgrounds; no school gardens; two toilets, in **bad condition**.

Building: Value \$700.00; two class rooms; no cloak rooms; insufficiently and improperly lighted; ceiled, but unpainted; in fairly good repair, and well kept.

Equipment: Double patent desks and teachers' desks; poor blackboards; no maps; no charts; no globe; no pictures; no reference dictionary; pupils have use of a small Sunday school library from church.

Organization: Eight months term; two teachers; nine grades; enrollment 62; no program posted; no societies or clubs organized.

Maintenance: School population of district 73; appropriation from county Board \$415.00; **Local district tax levy five mills.**



MANSON SCHOOL.

Miss Anilois Philmon, teacher, Danville, Ga.

Location: Three and half miles southeast of New Providence; five miles northwest of Chapman school.

Grounds: Area, two acres; titles in local trustees; fine grove; unimproved; ample playgrounds; no school gardens; **only one toilet.**

Building: Value \$450.00; one class room; no cloak rooms; fairly lighted; roof leaky; well kept; unpainted.

Equipment: Double patent desks; good blackboards; no maps; no charts; no globe; no pictures; no reference dictionary; no library.

Organization: Five months term; one teacher; six grades; enrollment 32; program posted; no organized clubs.

Maintenance: School population of district 39; apportionment \$195.00; no supplemental funds.

Members Canning Club: Misses Geneveive Williams, Clara Knight, Bessie Lou Hall, Effie Collier, Alice Rutherford.



NEW PROVIDENCE SCHOOL.

Mrs. C. E. Collins, teacher, Irwinton, Ga.

Location: Three and half miles west of Pleasant Plains; three and half miles northwest of Manson school.

Grounds: Indefinite area; titles in private individual; lot bare and unimproved; ample playgrounds; no school gardens; **only one toilet**, fair condition.

Building: Value \$350.00; one class room; no cloak rooms; improperly lighted; new building; well kept; unceiled and unpainted.

Equipment: Home-made desks; very poor blackboards; no maps; no charts; no globe; no pictures; no reference dictionary; no library.

Organization: Five months term; one teacher; five grades; enrollment 21; no program posted; no organized clubs.

Maintenance: School population of district 29; appropriation from county Board \$145.00; no supplemental fund.

Members Canning Club: Misses Ellen Burke, Gladys Burke, Ruby Sapp, Lucia Sapp.



OLD UNION SCHOOL.

Miss Bessie Happoldt, teacher, Toombsboro, Ga.

Location: Two miles northeast of Poplar Head school; five miles north of Salem.

Grounds: Area, one acre; titles (?); whole lot in woods; unimproved; small playgrounds; no school gardens; **only one toilet**, in bad condition.

Building: Value \$450.00; one class room; no cloak rooms; improperly lighted; ceiled, but unpainted; in good condition and well kept. Also used for Sunday school and occasional preaching services.

Equipment: Home-made desks; fair blackboards; no maps; no charts; no globes; no pictures; no reference dictionary; no library.

Organization: Five months term; one teacher; five grades; enrollment 12; no program posted; no organized clubs.

Maintenance: School population of district 35; appropriation from county Board \$175.00; no supplemental funds.



PLEASANT PLAINS SCHOOL.

Miss Leila Isreal, teacher, Danville, Ga.

Location: Two miles west of Butler school; three and half miles east of New Providence.

Grounds: Area, one and half acres; titles in trustees; wooded lot, unimproved; small playgrounds provided; no school gardens; **only one toilet.**

Building: Value \$600.00; one class room; no cloak rooms; fairly well lighted; in good condition and well kept; ceiled, but unpainted.

Equipment: Double patent desks; fairly good blackboards; four maps; no charts; no globe; no framed pictures; a reference dictionary; a good library.

Organization: Five months term; one teacher; eight grades; enrollment 36; program posted.

Maintenance: School population of district 52; appropriation from county Board \$260.00; no supplemental funds.

Members Canning Club: Misses Ardell Davidson, Ethel Davidson, Vera Jackson, Nellie Jackson, Myrtle Sanders.



POPLAR SPRINGS SCHOOL.

Mrs. J. W. Lanier, teacher, Toombsboro, Ga.

Location: Four miles west of

Grounds: Area, one acre; titles in trustees; lot bare and unimproved; small playgrounds; no school gardens; **no toilets.**

Building: Value \$450.00; one class room; no cloak rooms; fairly well lighted; in good repair and well kept; ceiled, but unpainted.

Equipment: Home-made desks; fairly good blackboards; no maps; no charts; no globe; no pictures; no reference dictionary; no library.

Organization: Five months term; one teacher; seven grades; enrollment 35; no program posted.

Maintenance: School population of district 50; appropriation from county Board \$250.00; no supplemental funds.

Members Canning Club: Misses Iris Dent, Celes Mercer, Orian Waters, Roberta Lord, Nora Brown, Johnnie Chambers, Myra Minton.



TOOMSBORO SCHOOL.

Miss Mary E. Bales, Principal; Miss Ruth Marlin, Assistant, P. O.
Toombsboro, Ga.

Location: On Central of Georgia Railway.

Grounds: Small town lot; titles probably in trustees; yards clean; very small playgrounds; no school gardens; two toilets in good condition.

Building: Value \$2,500.00; two class rooms; cloak rooms; well lighted; building in good condition and well kept; floors oiled; painted inside and outside.

Equipment: Good shop-made desks; cloth blackboards; several good maps; no charts or globes; good selection of framed pictures; no reference dictionary; library in good case; bubbling fountain.

Organization: Seven months term; two teachers; ten grades; enrollment 46; programs posted; an active Parent-teacher Club.

Maintenance: School population of district 85; appropriation from county Board \$425.00; supplemented by local fees.

Members Canning Club: Misses Nelle Bales, Hattie Dean, Pearl Dean.



SHADY GROVE SCHOOL.

Miss Hortense Wynn. Principal; Miss Eddie Stanley, Assistant, P. O. Irwinton, Ga. R. F. D.

Location: No other school within five or six miles.

Grounds: Area, five acres; titles in trustees; yards fenced and well kept; most of lot covered with grove and woods; ample play-grounds; no school gardens; two toilets in good condition.

Building: Value \$1,200.00; two class rooms; no cloak rooms; fairly well lighted; in good repair and well kept; ceiled; painted outside.

Equipment: Double patent desks and teachers' desks; poor black-boards; no maps; no charts; no globe; no reference dictionary; no library; framed pictures; organ.

Organization: Five months term; two teachers; eight grades; enrollment 67; program posted; no organized societies or clubs.

Maintenance: School population of district 85; appropriation from county Board \$425.00; no supplemental funds.

Members Canning Club: Misses Ollie Mae Cannon, Eva Wright, Martha Pierce, Madeline Pierce, Alma Pierce, Opal Taylor, Rosa Lee Martin, Eula Pierce, Nina Downing, Mutelle Pierce, Alma Downing.



THOMPSON BRANCH SCHOOL.

Miss Sara Lawrence, teacher, Milledgeville, Ga., R. 1.

Location: Two and half miles northeast of Mt. Carmel; three miles northwest of Fairview; three and half miles east of Snow Hill.

Grounds: Area, one acre; titles doubtful; yards in good condition; playgrounds small; no school gardens; **only one toilet**, condition bad.

Building: Value \$650.00; one class room; no cloak rooms; insufficiently lighted; in good repair; not well kept; painted inside and outside.

Equipment: Double patent desks (in bad condition); poor blackboards; no maps; good chart; no globe; no pictures; no reference dictionary; no library; covered water cooler, individual cups.

Organization: Five months term; one teacher; six grades; enrollment 46; program posted; no organized clubs.

Maintenance: School population of district 60; appropriation \$345.00. No supplemental funds.

Members Canning Club: Misses Ruby Hoover, Sabrina Patterson, Ruth Grimes, Claire Carr, Gertrude Patterson.



TURNER SCHOOL.

Miss Katie Rossee, teacher. Gordon, Ga.

Location: Three miles northwest of Gordon.

Grounds: Area, one acre; titles (?); lot entirely unimproved; very small playgrounds; no school gardens; **only one toilet.**

Building: Value \$400.00; one class room; no cloak rooms; fairly well lighted; in good repair and well kept; unceiled; unpainted.

Equipment: Double patent desks; very poor blackboards; State and United States history maps; no charts; no globe; no pictures; no library; a reference dictionary.

Organization: Five months term; one teacher; seven grades; enrollment 27; program posted; no organized clubs.

Maintenance: School population of district 56; appropriation from county Board \$280.00; no supplemental funds.

Members Canning Club: Misses Gladys Cobb, Alma Cobb, Jewell Valentine, Bertha Happoldt, Nellie Happoldt, Pearl Cobb.

LETTER FROM STATE SUPERINTENDENT

M. L. BRITAIN

To the County Superintendent and Teachers:

Educational results and good teaching generally are not often secured in a shiftless-looking building in which neither patrons, pupils, nor teachers take any pride. Indefiniteness has been removed at this point through the standard school. In the larger towns and cities pressure of public sentiment and the comment of visitors will sooner or later force good educational conditions—and they are improving constantly. Rural communities need to be shown and inspired by educational leaders and we have sent diplomas to more than two hundred county schools where the superintendents have certified to the fact that they have measured up to the standard in every particular. There are a number of localities in the State where the feeling is that no community in the county is able to bring its school up to these very reasonable requirements. I cannot help but think that this is a mistaken view and that some standard schools could be secured in every county in Georgia and that these would serve to inspire the others to progress. Superintendents have written that the use of this efficiency test has developed more progress in the past 12 months than for years previous in the way of improvement. The plan is of no value, however, where it is not used or applied and I earnestly hope we will have the effort at least of every superintendent in the State to have his county represented on this roll of honor. The list will be published in the next Annual Report. The standard is not unreasonably high and no more than the Georgia parent has the right to expect. Copies should be posted in every county school room in the State and can be secured for this purpose at any time on application to the State Department of Education. To be entitled to a diploma a school should measure up to the standard in the following particulars:

I. The Teacher.

1. Good Teaching.
2. Good Order and Management.
3. First Grade Certificate.
4. Full, Neat, and Accurate School Register.
5. Daily Program Posted in Room.
6. Teachers' Manual on Desk.

II. Grounds.

1. Good Condition.
2. Playgrounds.
3. School Garden.
4. Two Separate Sanitary Closets.

III. Building.

1. Painted Outside.
2. Plastered, or Ceiled and Painted.
3. No Leaks.
4. Windows without Broken Panes.
5. Cloak Rooms.
6. Good Doors with Locks and Keys.
7. Clean and Well-kept.

IV. Equipment.

1. Patent Modern Desks.
2. At least 20 Lineal feet of Blackboard per Room.
3. Building Comfortably Heated and Ventilated.
4. Framed Pictures on the Wall.
5. Dictionary, Maps and Library.
6. Sanitary Water Supply.

V. Associated Activities.

1. Manual Arts, Corn, Canning, Pig, Poultry, or Cooking Club.

VI. Salary of Teacher.

At least \$40 per month.

VII. Term.

At least seven months.





LIBRARY OF CONGRESS



0 019 877 542 3